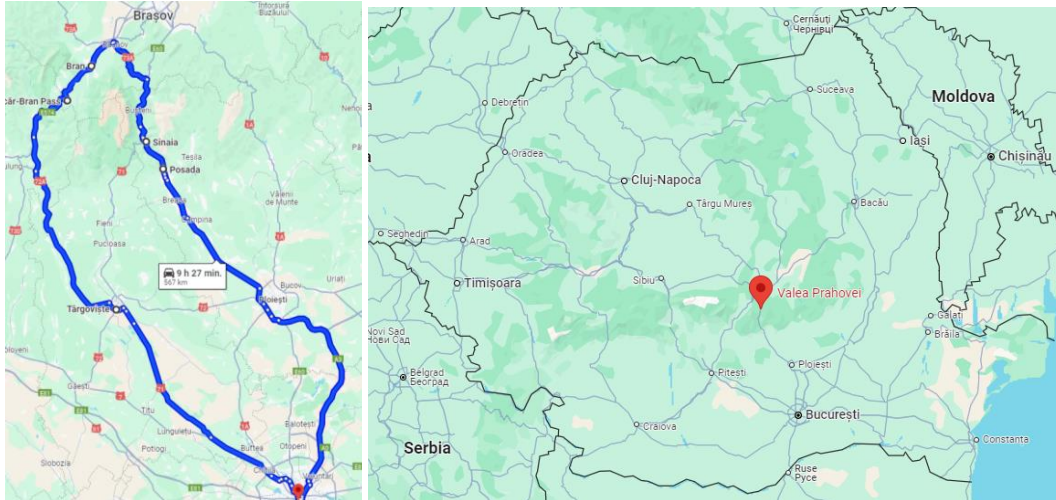


Excursion 1 – Friday, May 30, 2025: Prahova Valley – Southern Carpathians/Bucegi Mountains – Rucăr-Bran Corridor

Bucharest – Posada – Sinaia (Peleş Castle) – Râșnov (lunch – La Promenada restaurant) – Bran Castle (The Legend of Dracula) – Rucăr-Bran Corridor – Bucharest



Excursion Route

06:45 AM: Meeting at the bus

07:00 AM: Departure from Bucharest, heading towards the Prahova Valley, the most developed and famous tourist area in the Carpathian Mountains, specifically the Bucegi Mountains. The Bucegi Mountains are recognized as a natural park to protect large mammals (bears, wolves, lynx, deer, chamois, etc.) and rare flora (edelweiss - *Leontopodium alpinum* Cass, lady's slipper – *Cypripedium calceolus*, etc.), along with ancient forests. The geological structure with a combination of crystalline schists, sandstones, and limestones allows for the formation of spectacular landforms such as concretions, gorges, caves, waterfalls, lakes, etc.



The Sphinx of Bucegi, The Old Women (Babele), The Howling Waterfall, Scropoasa Lake with Orza Gorge

09:00 AM: Visit to the Posada Hunting Museum – 30 minutes visit.



Posada – the hunting museum

09:30 AM – 10:30 AM: Travel and visit to Sinaia resort

10:30 AM: Visit to Peleş Castle – guided tour reservation in English for foreign tourist group – 60 minutes visit.

Peleş Castle is located in the resort town of Sinaia, the former summer residence of the Romanian Royal Family, and currently houses the Peleş National Museum.



Peleş Castle, Sinaia Town Hall, Sinaia Casino

11:30 AM – 12:30 PM: Travel to Râșnov. The journey will pass through Bușteni and Azuga resorts, on the outskirts of the Bucegi Natural Park, some of the most popular mountain resorts, offering spectacular views and a wealth of vacation opportunities, from skiing to mountain excursions. Râșnov, located on the commercial route that crosses the Carpathian chain from Wallachia to Transylvania, was initially a Dacian-Roman fortress named Cumidava, then a peasant fortress was built, which still stands today and is an important tourist attraction (which will not be visited during this excursion).



Bușteni, the Cross on Caraiman dedicated to the heroes of World War I, Cantacuzino Castle

12:30 PM – 1:30 PM: Lunch at the “La Promenada” restaurant in Râșnov

1:30 PM – 2:30 PM: Travel and visit to Bran resort

2:30 PM: Visit to Bran Castle – guided tour reservation in English for foreign tourist group – 60 minutes visit.

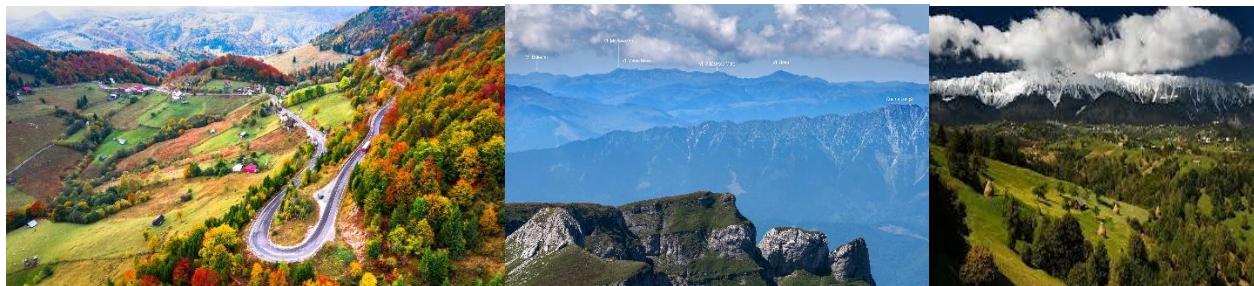
Bran Castle, internationally known as “Dracula’s Castle,” was transformed into a royal residence in 1920. Currently, the four-story museum exhibits collections of furniture, costumes, weapons, and armor. The Bran Domain also includes the Royal Park with two lakes, the Tea House, the Administrator’s House, and the Princess Ileana House.



Bran Castle

3:30 PM – 7:00 PM: Return to Bucharest through the Rucăr-Bran Corridor

The Rucăr-Bran Corridor consists of a series of tectonic depressions separating the Bucegi and Leaota Massifs from the Piatra Craiului and Iezer-Păpușa Mountains. It is a fascinating route, where numerous caves, gorges, limestone pavements, and cliffs are encountered due to the spectacular karst relief. With its landscapes and charm, the Rucăr-Bran Corridor hosts some of the most beautiful and authentic villages in Romania. These picturesque settlements resemble Swiss villages and delight visitors with their peaceful atmosphere, fresh air, and enchanting scenery in every season.



Rucăr-Bran Corridor

Registration for the excursions is done together with the registration for CLIPSAS.

Deadline: May 9, 2025

The excursions will be organized only if groups of at least 15 people are formed.